

FOR COMPONENT DETAILS REFER TO THE CITY OF ESCONDIDO UTILITIES APPROVED MATERIALS LIST LOCATED ON THE CITY WEBSITE.

NOTES:

- A. BEFORE WATER SERVICE IS PROVIDED, DETECTOR CHECK SHALL BE TESTED BY CITY STAFF TO INSURE PROPER WORKING CONDITION.
- B. TYPE OF DETECTOR ASSEMBLY SHALL BE BASED ON THE DEGREE OF HAZARD.
- C. ALL BOLTS SHALL BE STAINLESS STEEL.

- 1) DETECTOR CHECK ASSEMBLY (SHALL BE SELECTED FROM THE APPROVED U.S.C. LIST ON FILE WITH THE CITY)
- 2) RISER SPOOLS - SHALL BE CEMENT LINED & COATED STEEL OR DUCTILE IRON SPOOLS, WITH WELD-ON RAISED FACE FLANGES
- 3) FLANGED GATE VALVE (HUB OR HAND-WHEEL) AS APPROVED BY THE CITY (SEE W-4-E)
- 4) CAST IRON TEE OR 90.
- 5) CONCRETE PAD - 18" x 18" x 3 1/2"
- 6) VALVE SUPPORT STAND
- 7) 5/8" x 3/4" WATER METER (METER MUST BE PURCHASED FROM CITY UTILITY BILLING PRIOR TO CONNECTION TO CITY WATER SYSTEM). THE CITY SHALL PROVIDE, INSTALL AND MAINTAIN METER.
- 8) 2" LOCKING BALL VALVE WITH 2 1/2" FIRE HOSE CONNECTION.
- 9) 90° CAST IRON ELBOW

LEGEND ON PLANS

— [DCA] —

APPROVED: _____ DATE: 4-2-2014

UTILITY ENGINEER

CITY OF ESCONDIDO
UTILITY DEPARTMENT

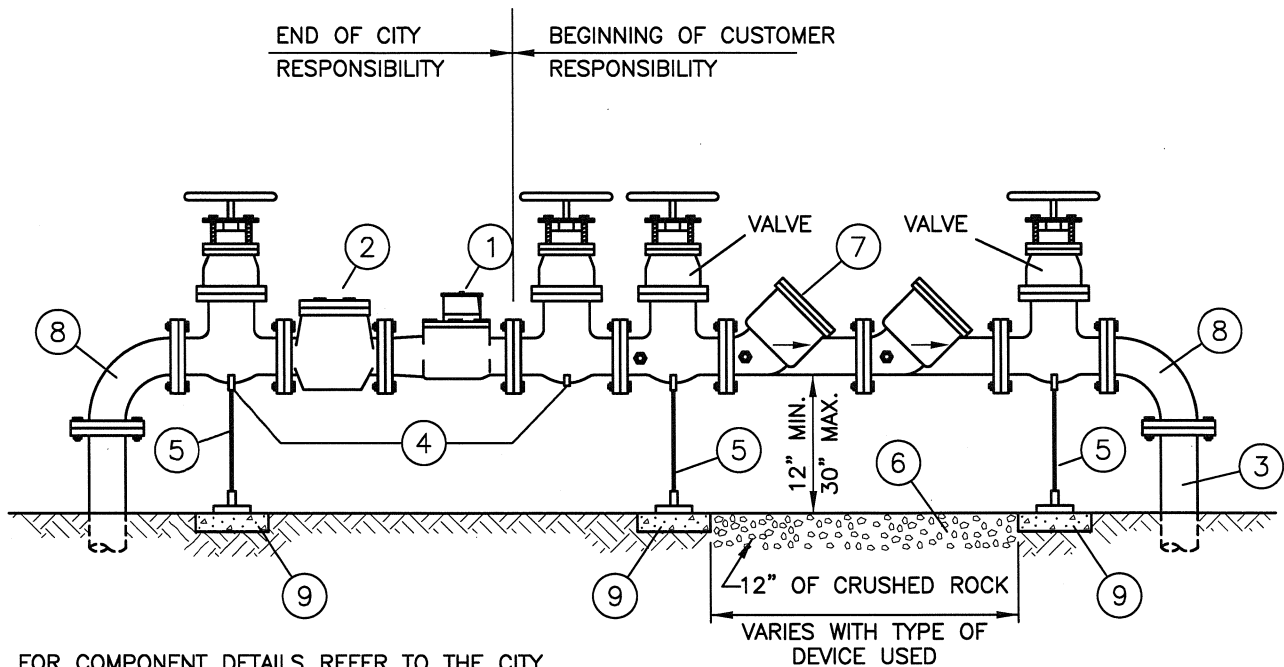
SCALE:
NOT TO SCALE

REVISED APPROVED

3", 4", 6", 8", & 10"
DETECTOR CHECK
ASSEMBLY

STANDARD DRAWING NO.

W-7-E



FOR COMPONENT DETAILS REFER TO THE CITY OF ESCONDIDO UTILITIES APPROVED MATERIALS LIST LOCATED ON THE CITY WEBSITE.

ALL BOLTS SHALL BE STAINLESS STEEL.

NOTES:

- ① WATER METER— METER SHALL BE PURCHASED FROM THE CITY. METER SHALL BE TYPE & SIZE APPROVED BY THE CITY. THE CITY SHALL PROVIDE, INSTALL AND MAINTAIN METER.
- ② STRAINER — SHALL BE TYPE & SIZE APPROVED BY THE CITY AND SHALL BE SUPPLIED BY THE CITY.
- ③ RISER SPOOLS — SHALL BE CEMENT LINED & COATED STEEL OR DUCTILE IRON, WITH WELD-ON RAISED FACE FLANGES.
- ④ FLANGED GATE VALVE (HUB OR HAND-WHEEL) PER STANDARD DRAWING W-4-E.
- ⑤ VALVE SUPPORT STAND
- ⑥ OPTIONAL ROCK BASE
- ⑦ BACKFLOW PREVENTION ASSEMBLY
- ⑧ 90° CAST IRON ELBOW
- ⑨ CONCRETE PAD — 18" X 18" X 3 1/2"

- A) ALL INSTALLATIONS SHALL BE ABOVE GROUND.
- B) ALL BACKFLOW PREVENTION ASSEMBLIES SHALL BE AS CLOSE TO THE WATER METER AS POSSIBLE.
- C) THE BACKFLOW PREVENTION ASSEMBLY SHALL BE SELECTED FROM THE APPROVED U.S.C. LIST ON FILE WITH THE CITY.
- D) NO CONNECTIONS SHALL BE MADE BETWEEN THE WATER METER AND THE BACKFLOW PREVENTION ASSEMBLY.
- E) TYPE OF BACKFLOW PREVENTION ASSEMBLY SHALL BE BASED ON THE DEGREE OF HAZARD.
- F) APPROPRIATE TEST COCKS SHALL BE IN PLACE AT ALL TIMES.
- G) CITY SHALL HAVE ACCESS TO BACKFLOW PREVENTION ASSEMBLY AT ALL TIMES.
- H) BACKFLOW PREVENTION ASSEMBLY SHALL HAVE AT LEAST THE SAME CROSS-SECTIONAL AREA AS THE WATER METER.
- I) BACKFLOW ASSEMBLY SHALL BE TESTED TO INSURE PROPER WORKING CONDITION BEFORE WATER IS PROVIDED, AND ANNUALLY THEREAFTER.

LEGEND ON PLANS

— BFPD —

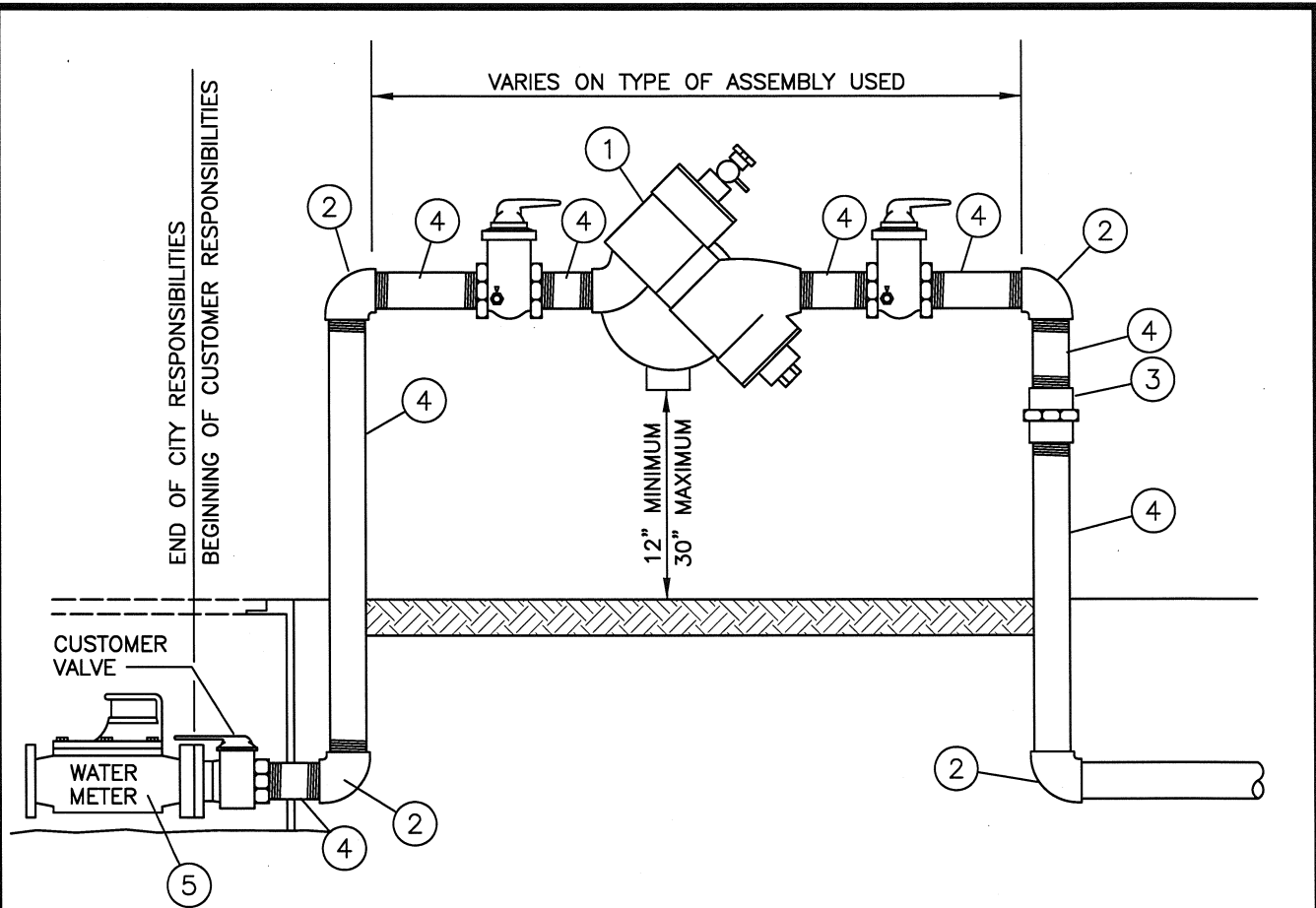
APPROVED:	DATE: 4-2-2014
UTILITY ENGINEER	
REVISED	APPROVED

CITY OF ESCONDIDO
UTILITY DEPARTMENT

SCALE:
NOT TO SCALE
STANDARD DRAWING NO.

**3", 4", 6", 8" & 10"
STANDARD METER ASSEMBLY
BACKFLOW PREVENTION
ASSEMBLY 3" & LARGER**

W-8-E




FOR COMPONENT DETAILS REFER TO THE CITY OF ESCONDIDO UTILITIES APPROVED MATERIALS LIST LOCATED ON THE CITY WEBSITE.

- ① BACKFLOW PREVENTION ASSEMBLY
- ② 90° ELBOW (THREADED RED BRASS OR COPPER)
- ③ UNION (THREADED RED BRASS OR COPPER)
- ④ NIPPLE (THREADED RED BRASS, OR COPPER, VARIES IN LENGTH)
- ⑤ WATER METER STD. W-1-E OR W-2-E

NOTES:

- A) ALL INSTALLATIONS SHALL BE ABOVE GROUND.
- B) ALL BACKFLOW PREVENTION ASSEMBLIES SHALL BE AS CLOSE TO THE WATER METER AS POSSIBLE.
- C) THE BACKFLOW PREVENTION ASSEMBLY SHALL BE SELECTED FROM THE APPROVED U.S.C. LIST ON FILE WITH THE CITY.
- D) NO CONNECTIONS SHALL BE MADE BETWEEN THE WATER METER AND THE BACKFLOW PREVENTION DEVICE.
- E) TYPE OF BACKFLOW PREVENTION DEVICE SHALL BE BASED ON THE DEGREE OF HAZARD.
- F) CITY SHALL HAVE ACCESS TO BACKFLOW PREVENTION DEVICE AT ALL TIMES.
- G) REFER TO STANDARD DRAWINGS FOR INSTALLATION OF WATER METER & SERVICE. (W-1-E AND W-2-E)
- H) OPTIONAL: STRAINER LOCATED DOWNSTREAM OF ASSEMBLY.
- I) BACK FLOW PREVENTION ASSEMBLY SHALL HAVE AT LEAST THE SAME CROSS-SECTIONAL AREA AS THE WATER METER.
- J) BEFORE WATER SERVICE IS PROVIDED, BACKFLOW ASSEMBLY SHALL BE TESTED BY CITY STAFF TO INSURE PROPER WORKING CONDITION.

APPROVED: 	DATE: 4-2-2014
UTILITY ENGINEER	
REVISED	APPROVED

CITY OF ESCONDIDO
UTILITY DEPARTMENT

SCALE:
NOT TO SCALE
STANDARD DRAWING NO.
W-10-E

BACKFLOW PREVENTION
ASSEMBLY 2" & SMALLER