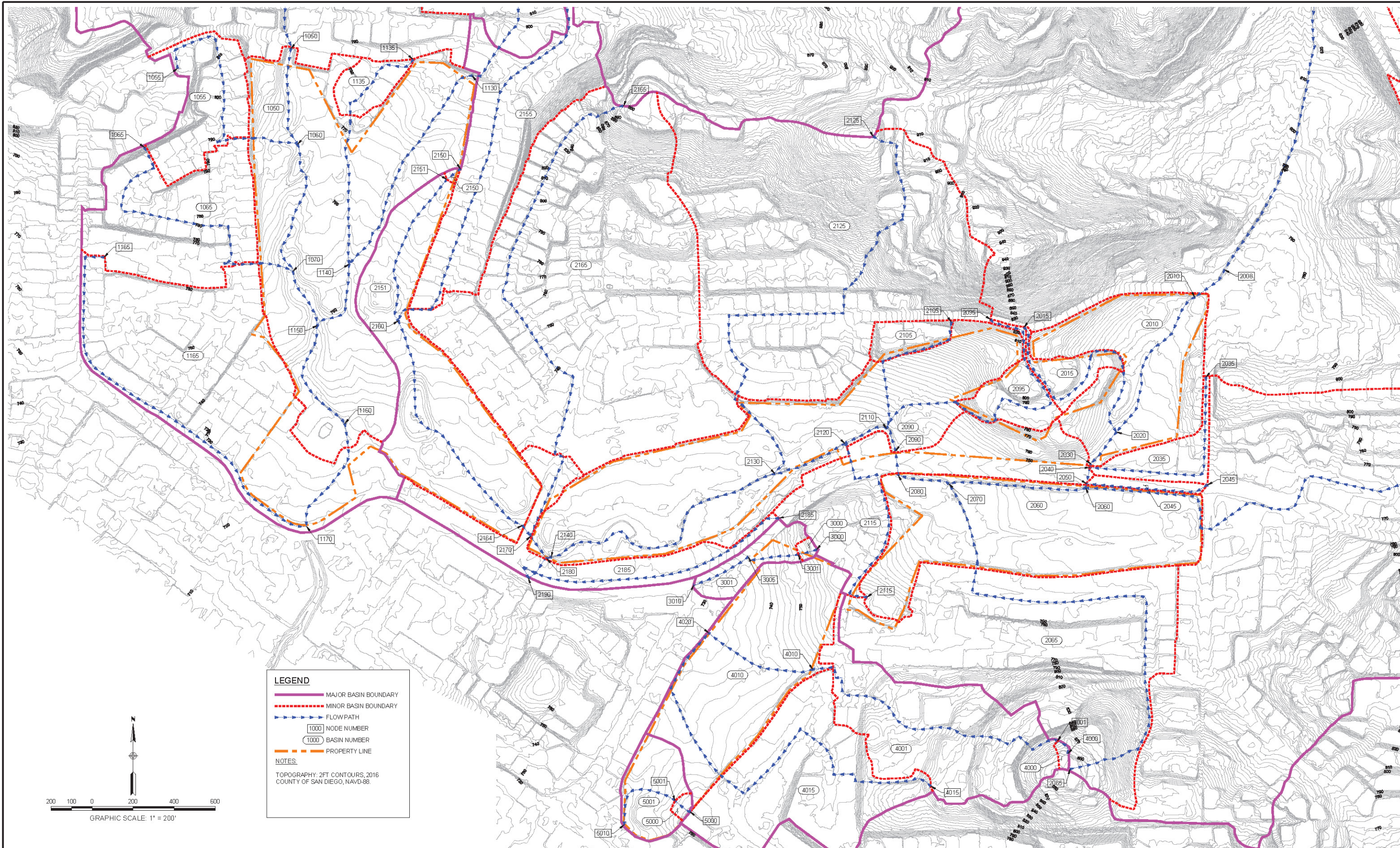


MAP POCKET 1

**Drainage Study Map
for
Escondido Country Club
[Pre-project]**

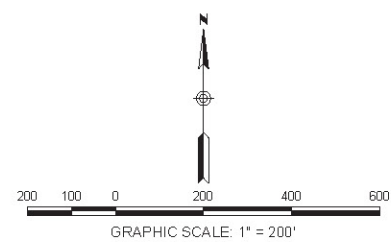


LEGEND

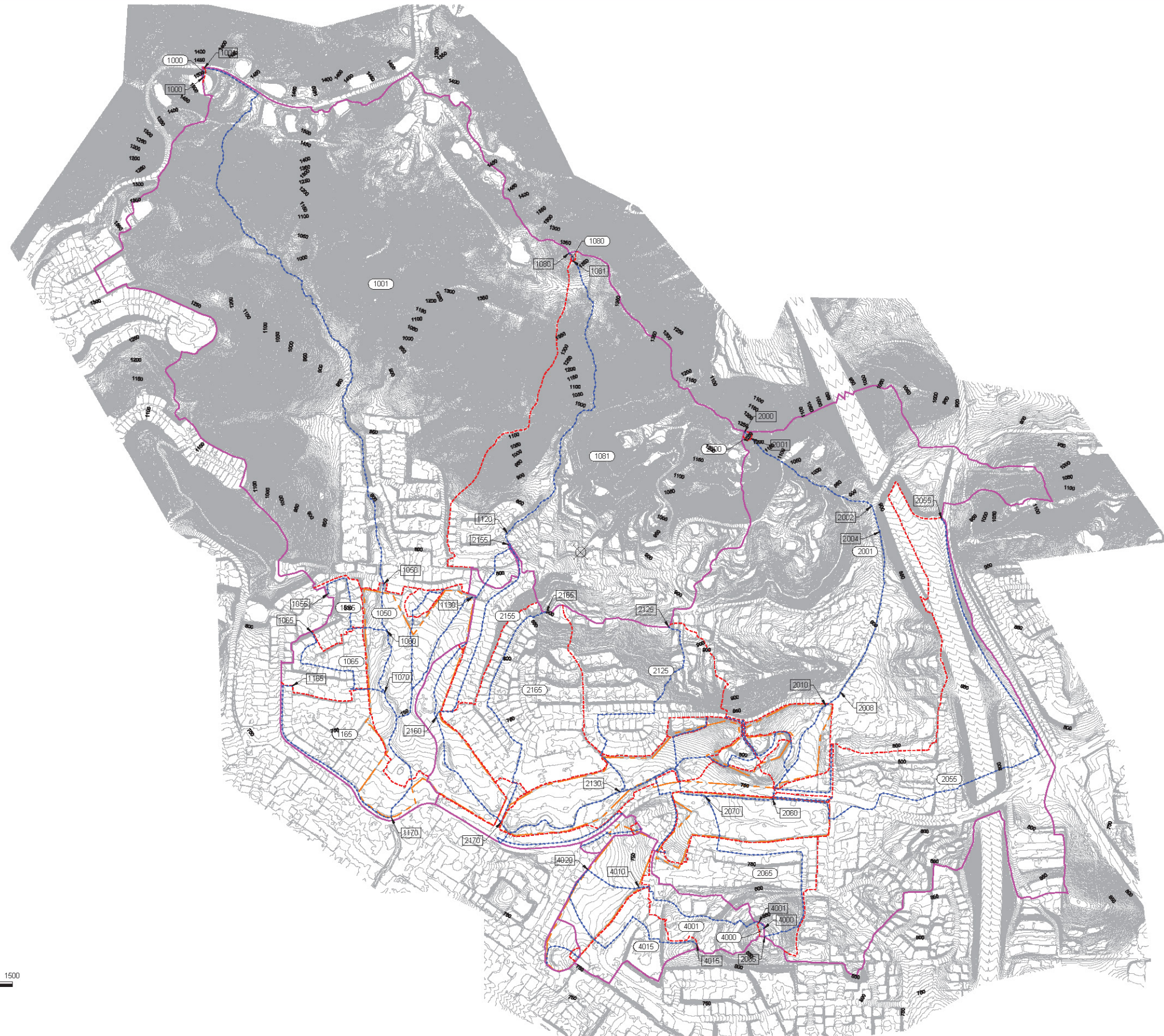
- MAJOR BASIN BOUNDARY
- - - MINOR BASIN BOUNDARY
- FLOW PATH
- 1000 NODE NUMBER
- 1000 BASIN NUMBER
- - - PROPERTY LINE

NOTES

TOPOGRAPHY: 2FT CONTOURS, 2016
 COUNTY OF SAN DIEGO, NAVD-88



**EXISTING CONDITION HYDROLOGY
 FOR
 ESCCONDIDO COUNTRY CLUB**

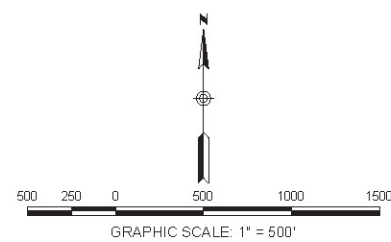


LEGEND

- MAJOR BASIN BOUNDARY
- - - MINOR BASIN BOUNDARY
- FLOW PATH
- 1000 NODE NUMBER
- 1000 BASIN NUMBER
- - - PROPERTY LINE

NOTES:

TOPOGRAPHY: 2FT CONTOURS, 2016
 COUNTY OF SAN DIEGO, NAVD-88.



EXISTING CONDITION HYDROLOGY
 FOR
 ESCONDIDO COUNTRY CLUB

MAP POCKET 2

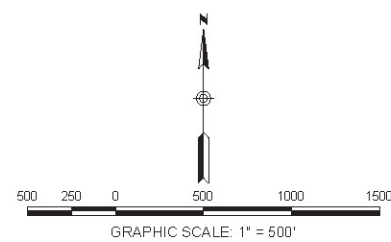
**Drainage Study Map
for
Escondido Country Club
[Post-project]**



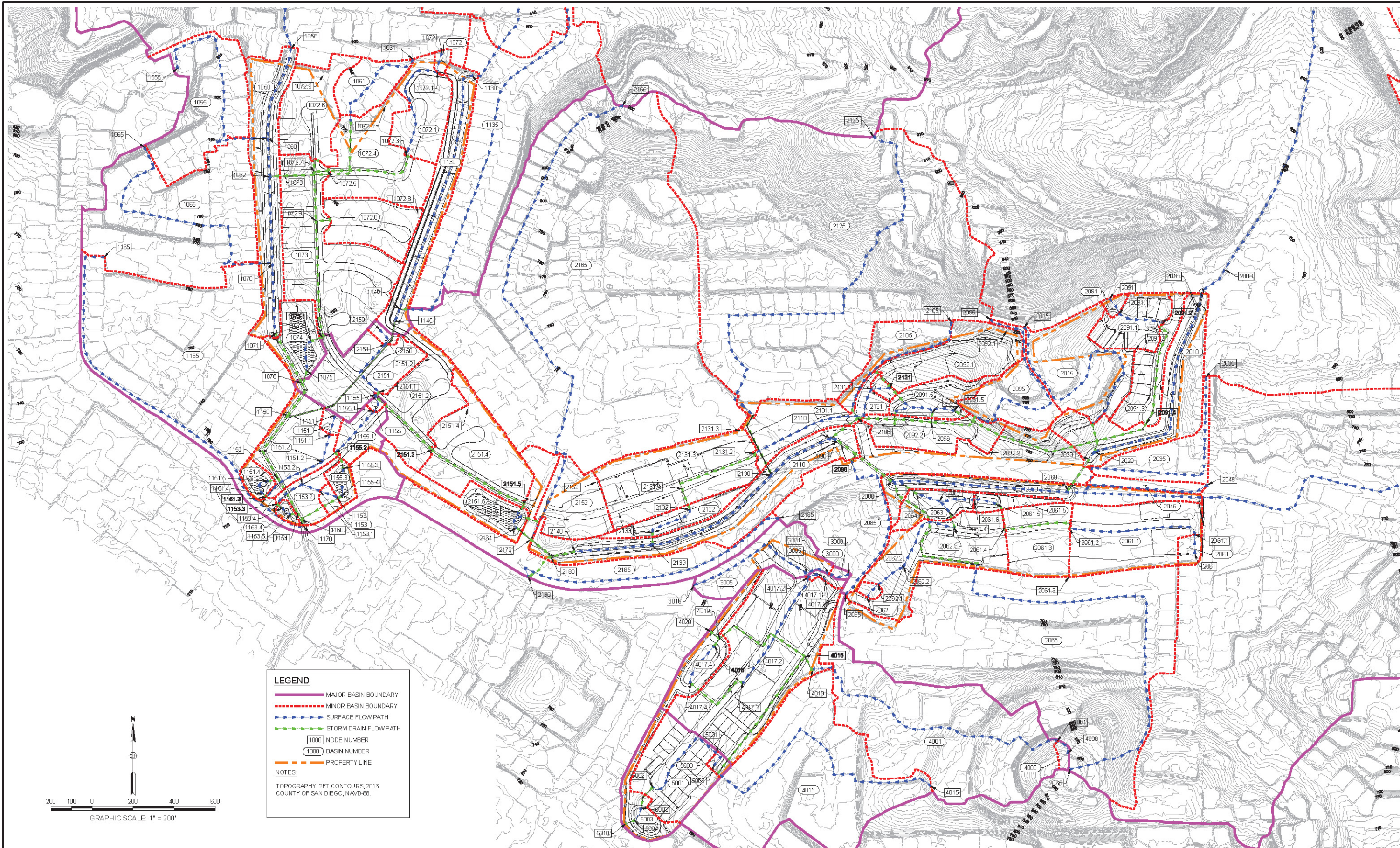
LEGEND

- MAJOR BASIN BOUNDARY
- MINOR BASIN BOUNDARY
- SURFACE FLOW PATH
- STORM DRAIN FLOW PATH
- 1000 NODE NUMBER
- 1000 BASIN NUMBER
- PROPERTY LINE

NOTES:
 TOPOGRAPHY: 2FT CONTOURS, 2016
 COUNTY OF SAN DIEGO, NAVD-88.



PROPOSED CONDITION HYDROLOGY
 FOR
 ESCONDIDO COUNTRY CLUB

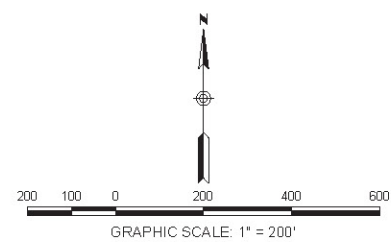


LEGEND

- MAJOR BASIN BOUNDARY
- - - MINOR BASIN BOUNDARY
- SURFACE FLOW PATH
- STORM DRAIN FLOW PATH
- 1000 NODE NUMBER
- 1000 BASIN NUMBER
- - - PROPERTY LINE

NOTES:

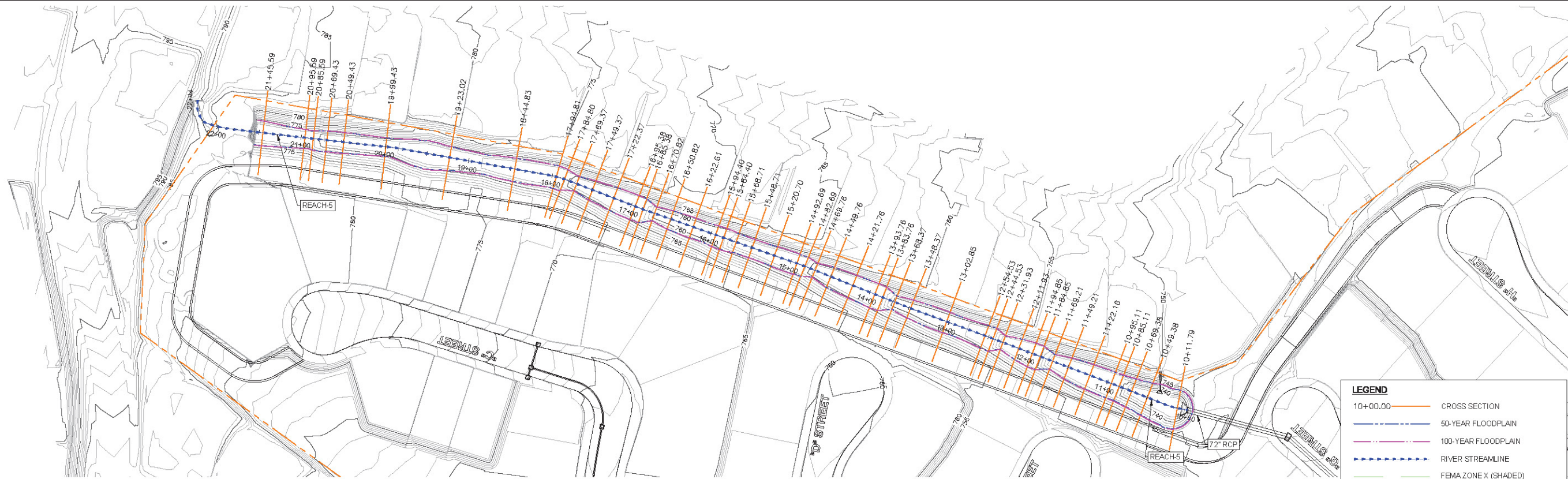
TOPOGRAPHY: 2FT CONTOURS, 2016
 COUNTY OF SAN DIEGO, NAVD-88



PROPOSED CONDITION HYDROLOGY
 FOR
 ESCCONDIDO COUNTRY CLUB

MAP POCKET 3

HEC-RAS Workmaps

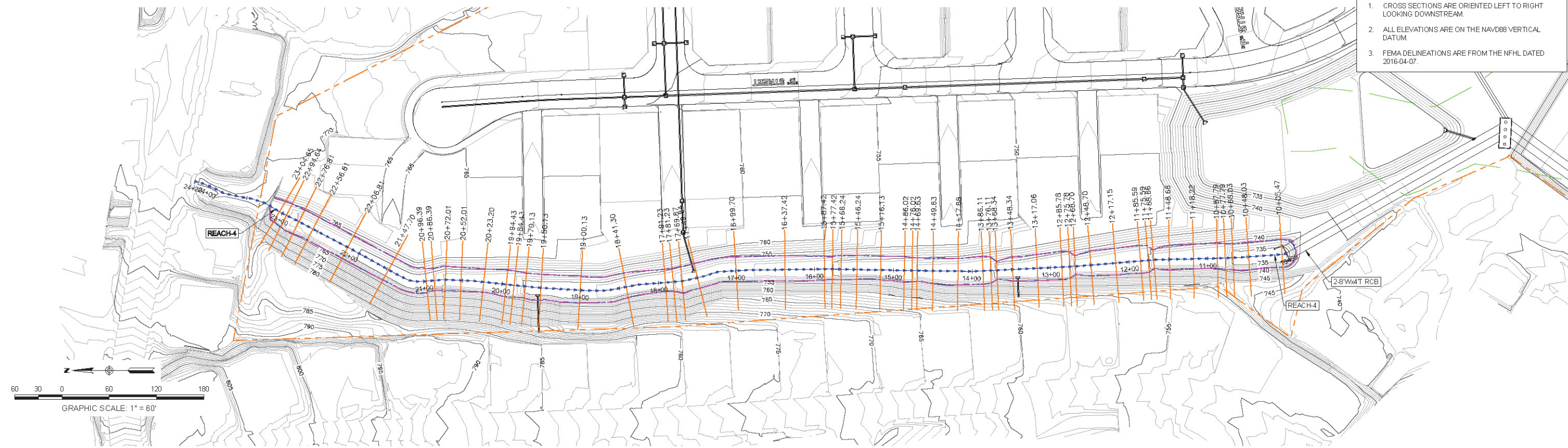


LEGEND

- 10+00.00 — CROSS SECTION
- 50-YEAR FLOODPLAIN
- 100-YEAR FLOODPLAIN
- RIVER STREAMLINE
- FEMA ZONE X (SHADED)
- FEMA ZONE A
- FEMA ZONE AH
- FEMA ZONE AH
- PROPERTY LINE

NOTES

1. CROSS SECTIONS ARE ORIENTED LEFT TO RIGHT LOOKING DOWNSTREAM.
2. ALL ELEVATIONS ARE ON THE NAVD88 VERTICAL DATUM.
3. FEMA DELINEATIONS ARE FROM THE NFHL DATED 2016-04-07.



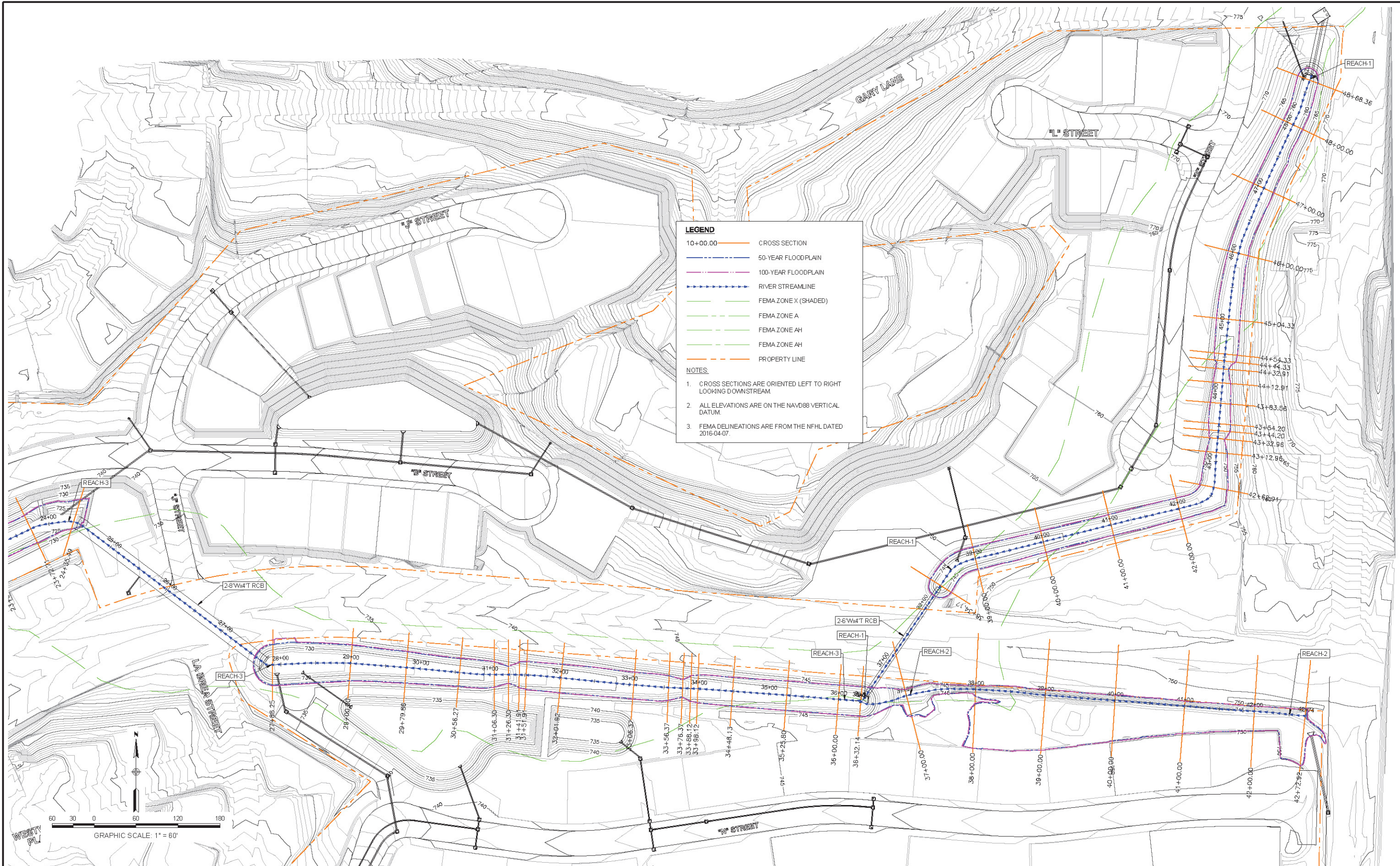
PROPOSED CONDITION HEC-RAS
FOR
ESCONDIDO COUNTRY CLUB
REACH-4, REACH-5
SHEET 3 OF 3

LEGEND

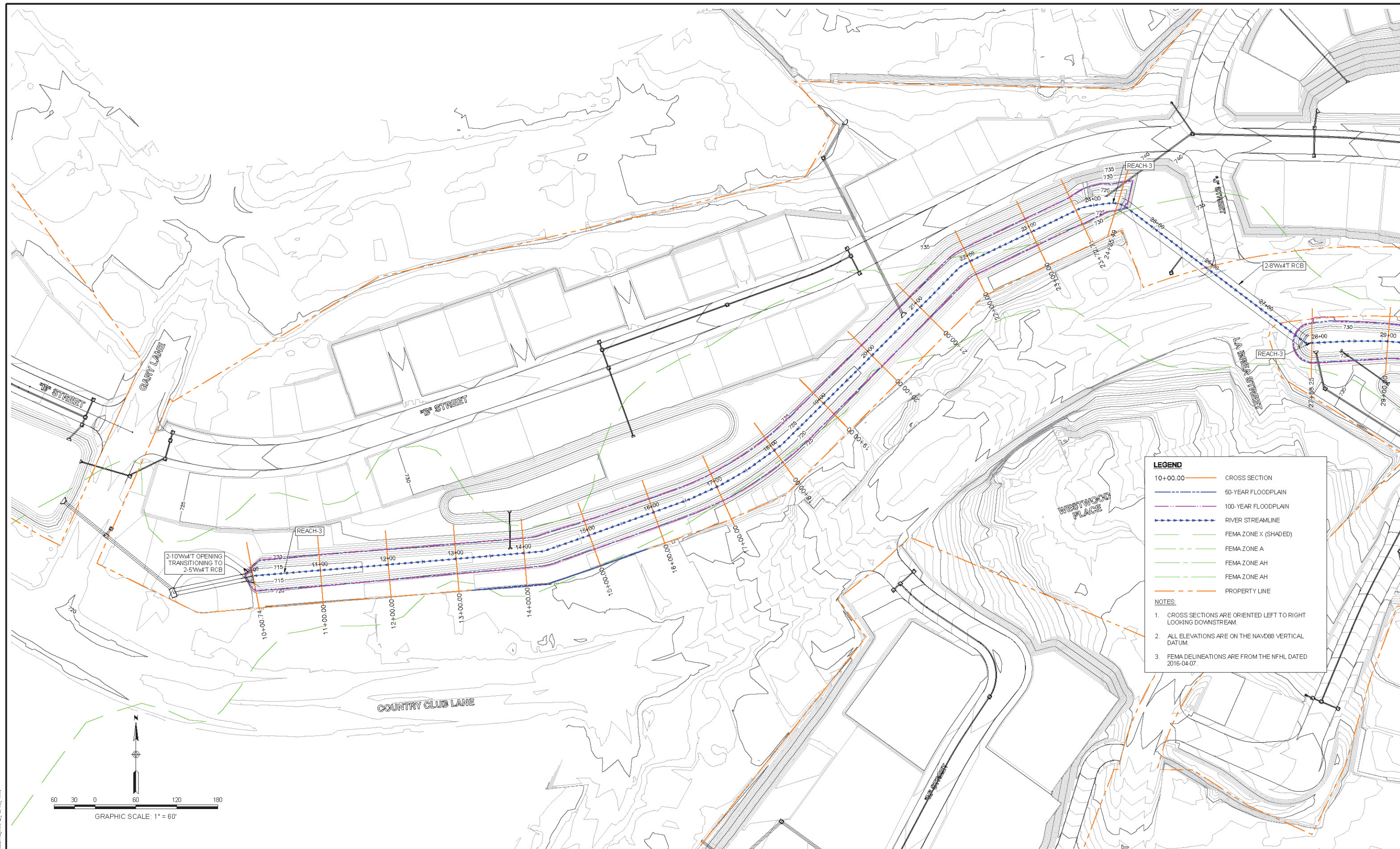
- 10+00.00 — CROSS SECTION
- 50-YEAR FLOODPLAIN
- 100-YEAR FLOODPLAIN
- RIVER STREAMLINE
- FEMA ZONE X (SHADED)
- FEMA ZONE A
- FEMA ZONE AH
- FEMA ZONE AH
- PROPERTY LINE

NOTES:

1. CROSS SECTIONS ARE ORIENTED LEFT TO RIGHT LOOKING DOWNSTREAM.
2. ALL ELEVATIONS ARE ON THE NAVD88 VERTICAL DATUM.
3. FEMA DELINEATIONS ARE FROM THE NFHL DATED 2016-04-07.



PROPOSED CONDITION HEC-RAS
 FOR
 ESCONDIDO COUNTRY CLUB
 REACH-1, REACH-2, REACH-3
 SHEET 2 OF 3

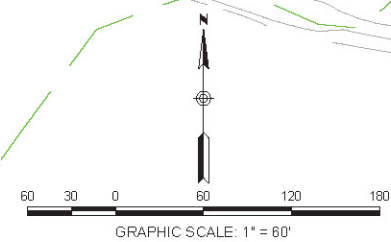


LEGEND

- 10+00.00 — CROSS SECTION
- 50-YEAR FLOODPLAIN
- 100-YEAR FLOODPLAIN
- RIVER STREAMLINE
- FEMA ZONE X (SHADED)
- FEMA ZONE A
- FEMA ZONE AH
- FEMA ZONE AH
- PROPERTY LINE

NOTES:

1. CROSS SECTIONS ARE ORIENTED LEFT TO RIGHT LOOKING DOWNSTREAM.
2. ALL ELEVATIONS ARE ON THE NAVD88 VERTICAL DATUM.
3. FEMA DELINEATIONS ARE FROM THE NFHL DATED 2016-04-07.



PROPOSED CONDITION HEC-RAS
FOR
ESCONDIDO COUNTRY CLUB
REACH-3
SHEET 1 OF 3

ELECTRONIC FILES

Compact Disc (CD): Electronic Files