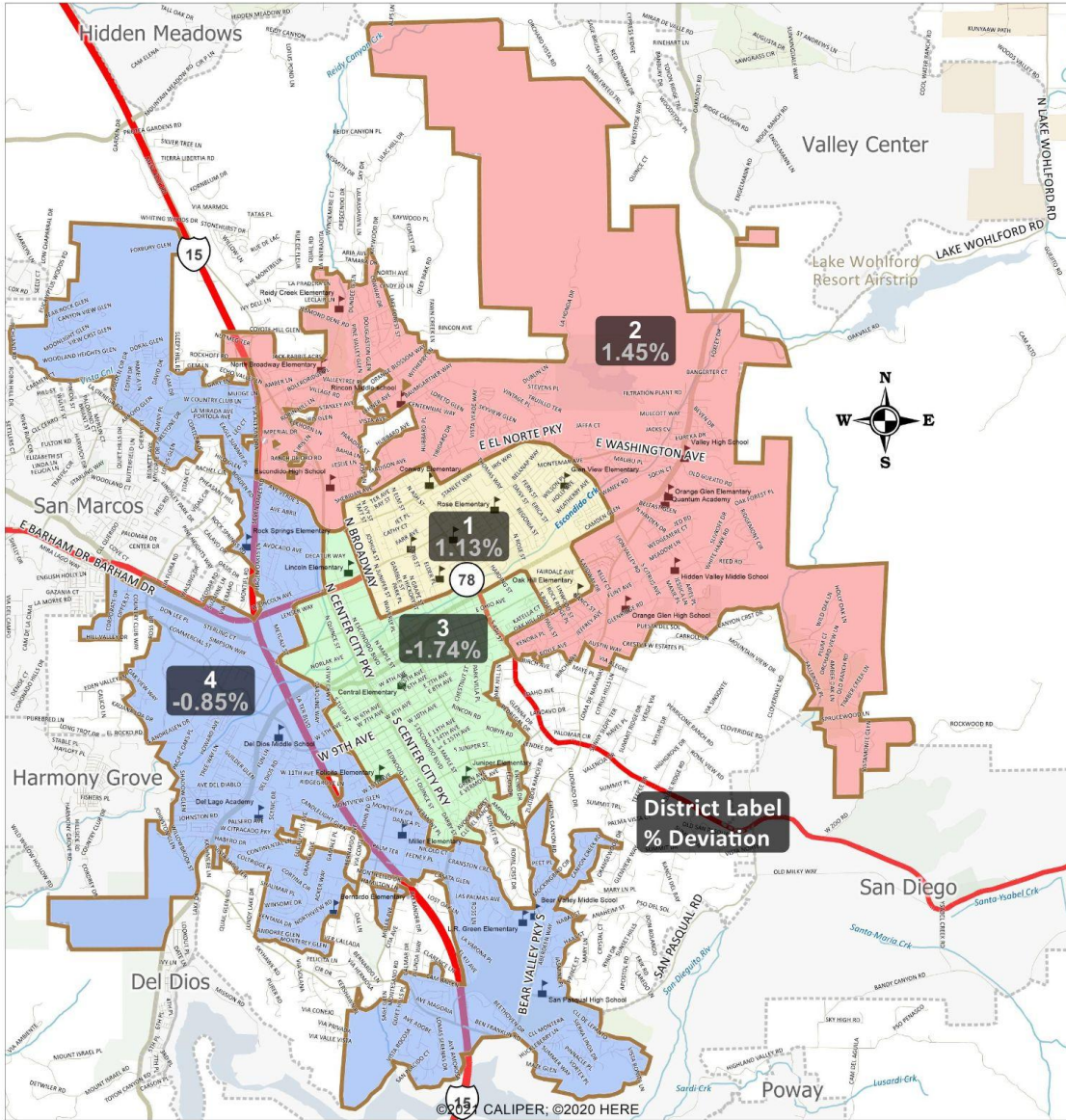


**Escondido Independent Redistricting Commission  
February 3, 2022 Meeting  
Visualization 1C**



District	Population	Deviation	% Deviation	CVAP	% Black CVAP	% Asian CVAP	% Latino CVAP	% White CVAP
1	38,307	428	1.13%	19,918	2.88%	7.13%	54.93%	32.17%
2	38,430	551	1.45%	24,541	2.54%	11.41%	29.59%	53.22%
3	37,221	-658	-1.74%	19,788	4.74%	4.80%	41.52%	45.59%
4	37,558	-321	-0.85%	26,762	3.37%	10.87%	20.91%	62.50%

\*CVAP = Citizen Voting Age Population

Please note this is an initial visualization for the purpose of soliciting feedback. This is not an official or finalized map. For more information or to provide comment, please visit:

<https://www.escondido.org/independent-redistricting>